

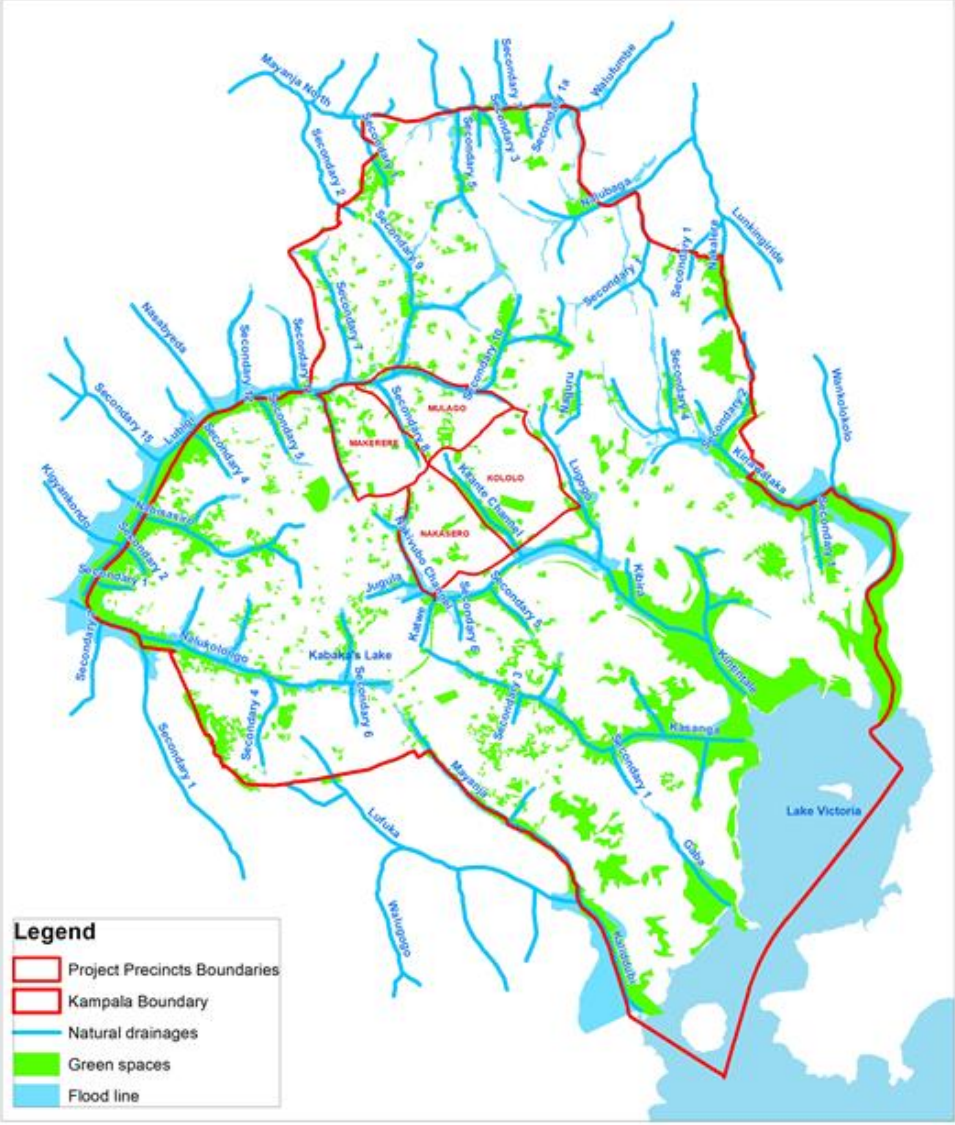
Strasbourg.eu
eurométropole



Integration of nature and people into urban development and climate action in Kampala

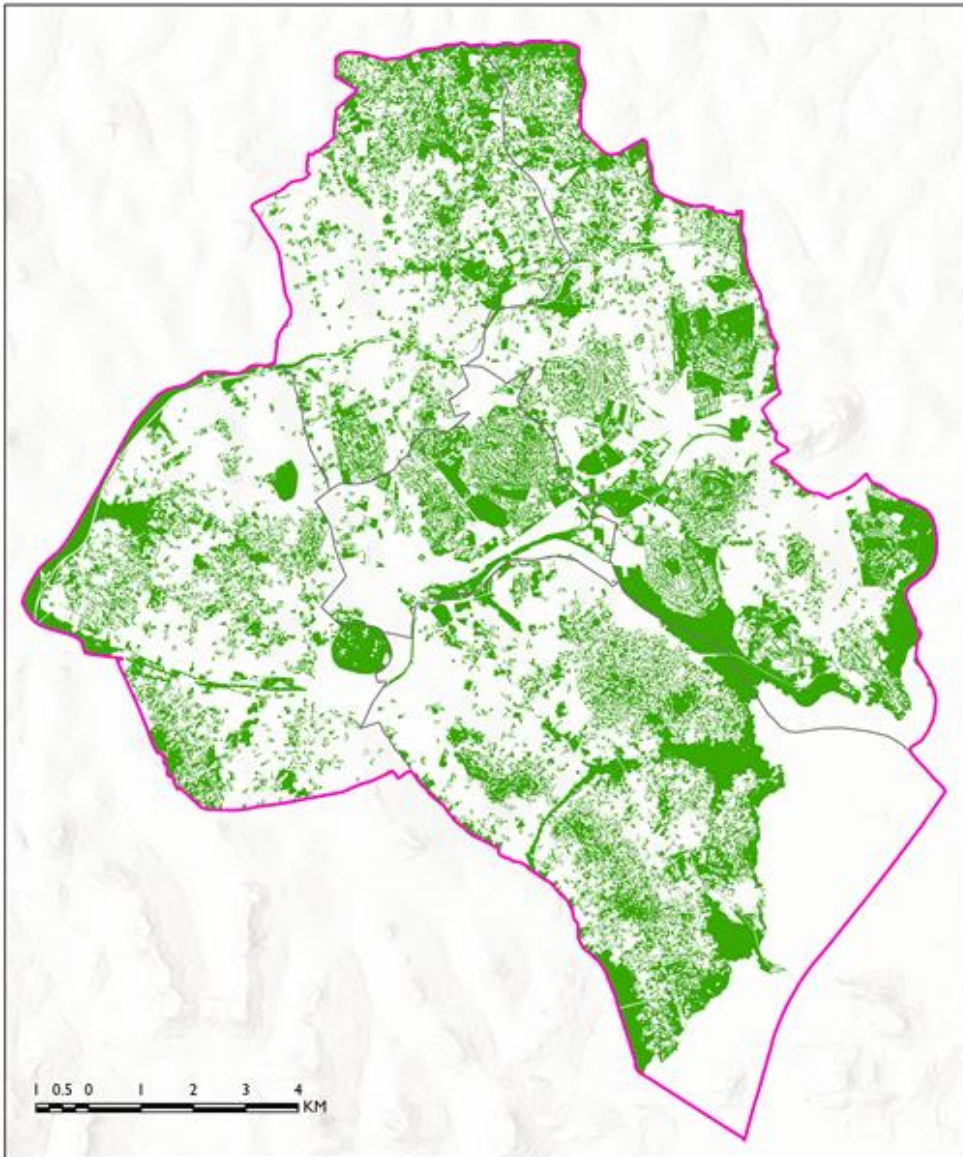


KAMPALA CAPITAL CITY AUTHORITY DETAILED NEIGHBORHOOD PLANNING 2018-2023



NATURAL DRAINAGES AND GREEN SPACES



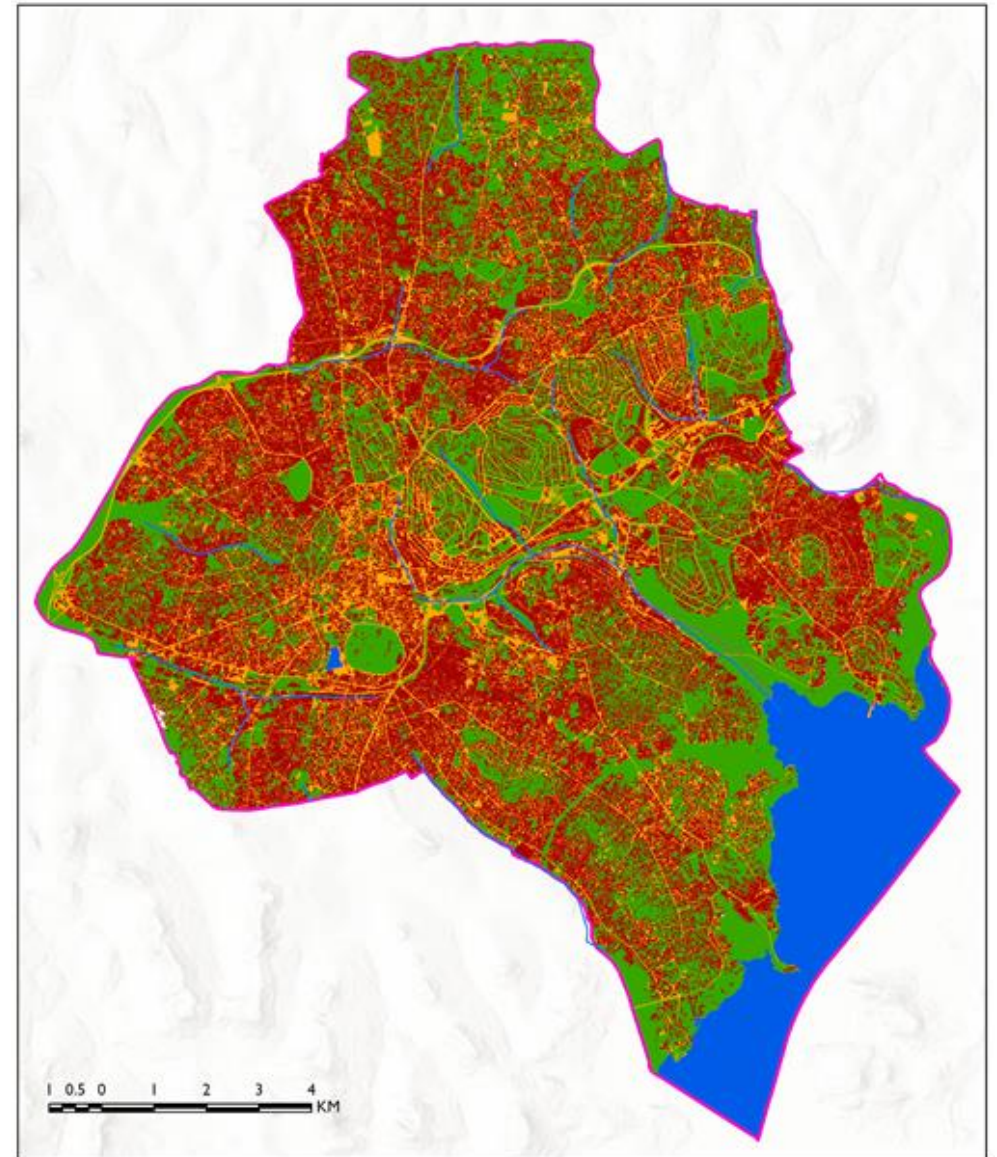


LEGEND
 [Pink outline] KAMPALA BOUNDARY
 [White outline] KAMPALA DIVISIONS
 [Green fill] GREEN SPACES >2500 sqM



DATA SOURCE
 Administrative Boundary: UBOS 2013
 Green Spaces: KCCA 2023
 Esri, NASA, NGA, USGS

COORDINATE SYSTEM
 Arc_1960_UTM_Zone_36N
 Projection: Transverse_Mercator
 False_Easting: 500000.0
 Copyright: KCCA GIS Unit, September 2023



LEGEND
 [Pink outline] KAMPALA BOUNDARY
 [White outline] KAMPALA DIVISIONS
 [Green fill] GREEN SPACES >2500 sqM
 [Red fill] URBAN AREA
 [Blue fill] WATER
 [Yellow fill] KAMPALA NEG SHAPE
 [Blue line] WATER CHANNELS



DATA SOURCE
 Administrative Boundary: UBOS 2013
 Green Spaces: KCCA 2023
 Esri, NASA, NGA, USGS

COORDINATE SYSTEM
 Arc_1960_UTM_Zone_36N
 Projection: Transverse_Mercator
 False_Easting: 500000.0
 Copyright: KCCA GIS Unit, September 2023

BIODIVERSITY SURVEY OBJECTIVES

1

Establish the distribution and diversity of bird species in the green spaces and associated blue infrastructure in Kampala Capital City

2

Document local knowledge of wild vertebrate resources that inhabit the green spaces in Kampala Capital City

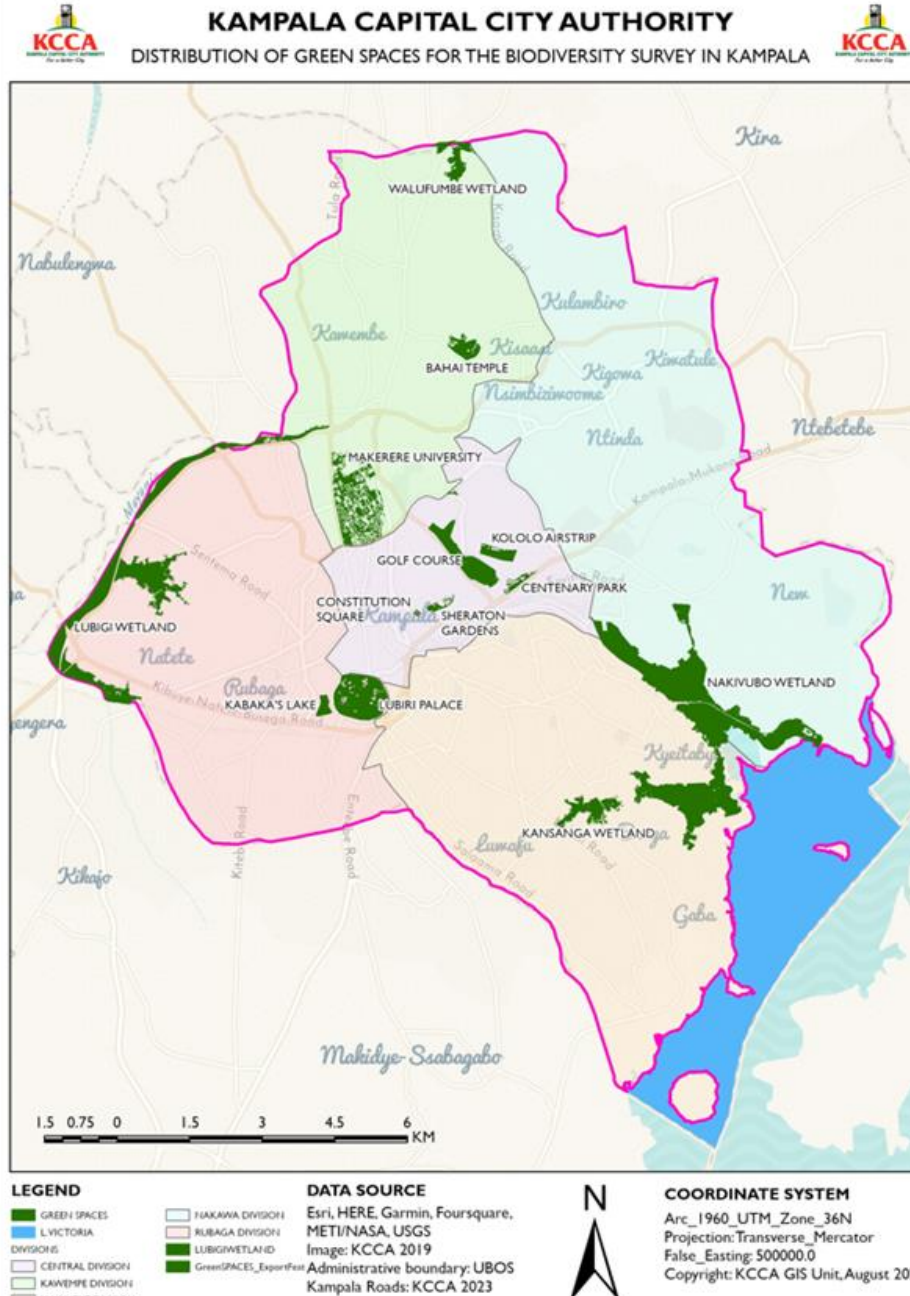
3

Assess the local benefits of the wild vertebrate resources that inhabit the green spaces in Kampala Capital City

4

Determine local preferences of wild vertebrate resources for conservation in the green spaces in Kampala Capital City

AREAS COVERED



Inventory Sites in Kampala Capital City:

- Jubilee Park (Sheraton gardens)
- Constitutional Square
- Makerere University
- Kitante Golf Course
- Kololo Independence Grounds
- Centenary Park
- Namirembe Cathedral

Overall, survey recorded **2,248 birds** belonging to **108 bird species**

28 species accounted for $> 85\%$ of the total number of birds recorded.

Seventy three species, including 21 singletons (species with one individual) had less than 10 individuals.

- Slight differences existed in the dominant species in the divisions

Lubaga Division

Species	Abundance
<i>Corvus albus</i> {Pied Crow}	93
<i>Egretta garzetta</i> {Little egret}	65
<i>Milvus migrans</i> {Black kite}	42
<i>Leptoptilos crumeniferus</i> {Marabou Stork}	42
<i>Lamprotonus purpuroptera</i> {Ruepell's long-tailed Sterling}	42

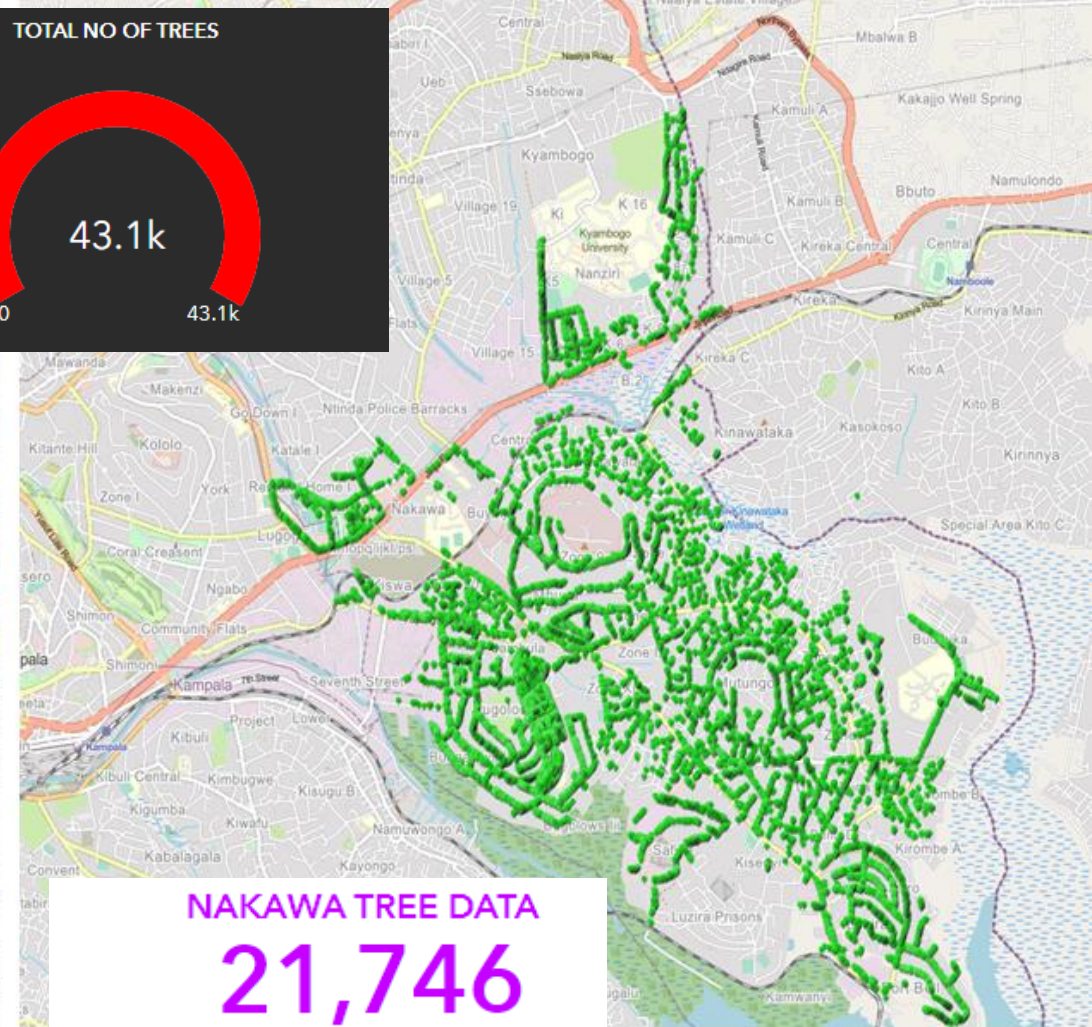
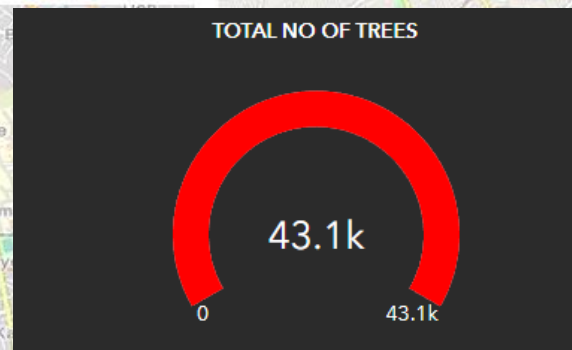
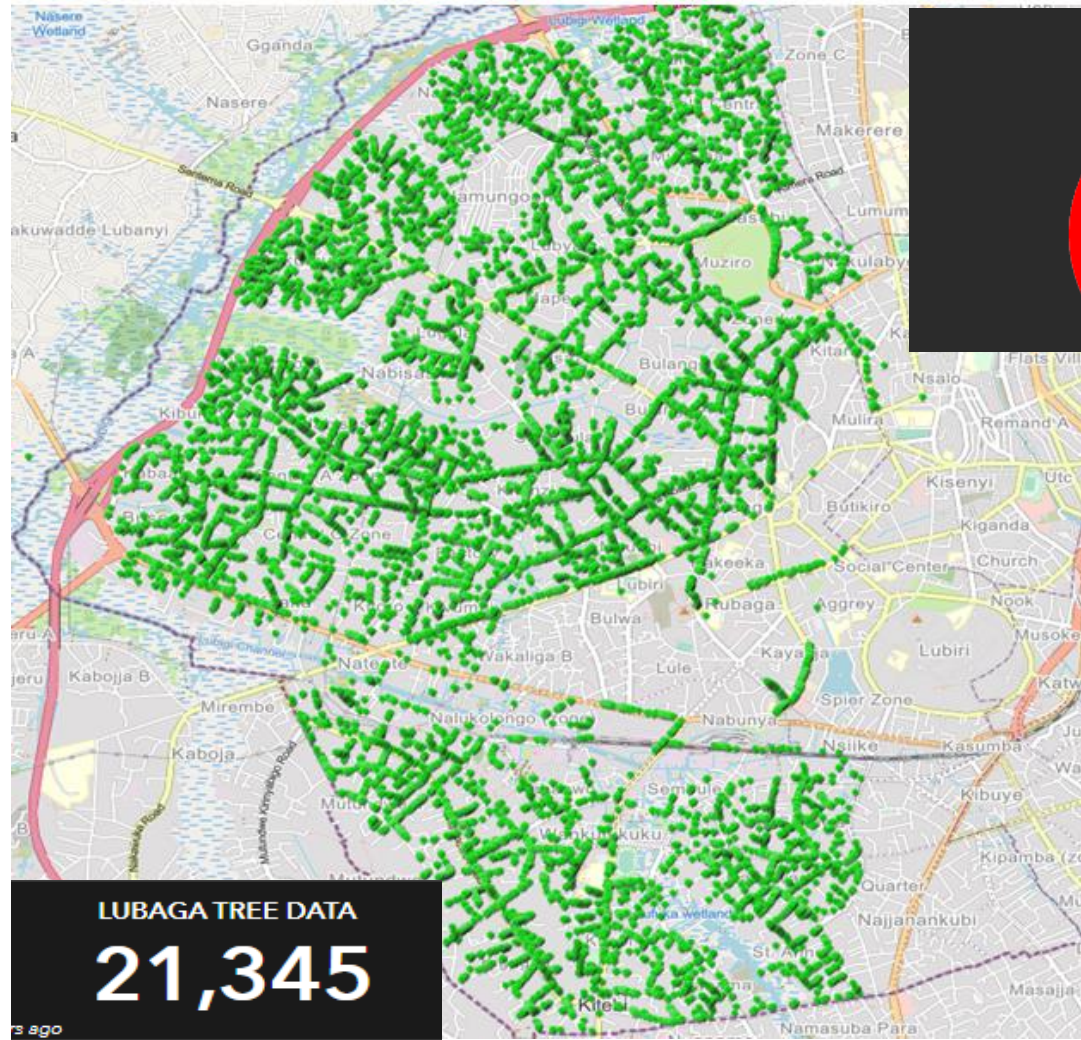


Makindye Division

Species	Abundance
<i>Milvus migrans</i> {Black kite}	46
<i>Bostrychia hagedash</i> {Hadada ibis}	41
<i>Bubulcus ibis</i> {Cattle egret}	39
<i>Corvus albus</i> {Pied crow}	38
<i>Leptoptilos crumeniferus</i> {Marabou stork}	31



URBAN FORESTRY TREE AUDIT

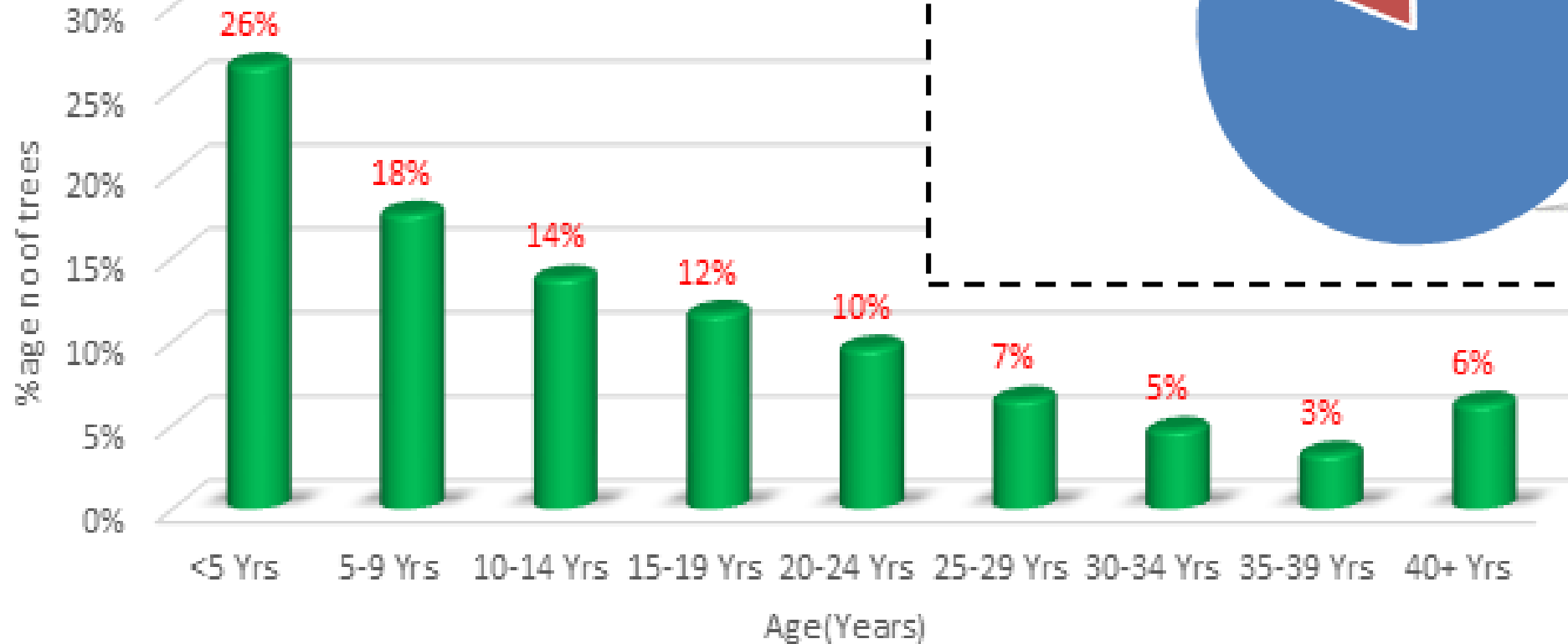
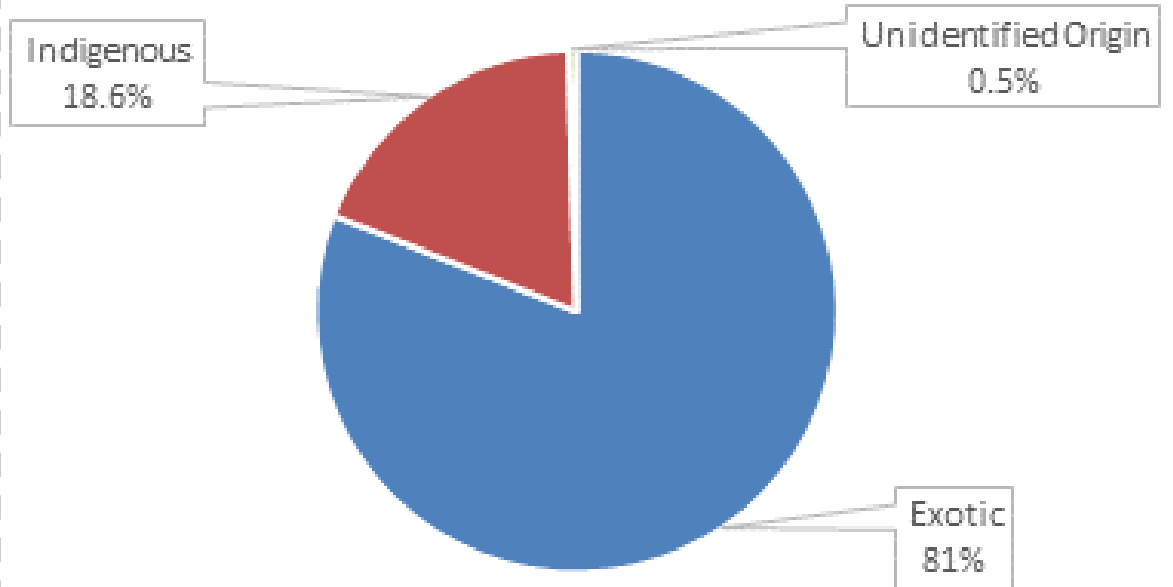


TOTAL TREES AUDITED

TOTAL TREES AUDITED

- Trees counted: **106,268 trees**
- Tree species: **328 species**

%age number of trees by origin



TWINNING OF CITIES: KAMPALA AND STRASBOURG



PARTNERSHIPS: YOUTH, LOCAL LEADERS & PRIVATE SECTOR



STAKEHOLDER ENGAGEMENTS:

